

Infrared Continuous Gas Analyser ZPA Series

Features

- ❖ Excellent Stability : Zero drift $\pm 0.5\%$ FS/ week or better (ZPB and ZPG)
- ❖ Simultaneous and continuous measurement of up to 5 gas components (ZPA and ZPB)
- ❖ Compact and lightweight : 130 (H) x 483 (W) x (D) mm, 11 kg or less
- ❖ Unique measurement cell design reduces maintenance
- ❖ Atmospheric pressure compensation simplifies correction for atmospheric and altitude pressure variations
- ❖ Built-in paramagnetic or zirconium fuel cell oxygen sensor available

Applications

- ❖ Heat treatment furnace
- ❖ Biomass
- ❖ Refuse incinerator
- ❖ Storage of fruits & Irrigation / Greenhouse
- ❖ Thermal power generation boiler

Specifications

Measurement principle : Non-dispersive infrared gas Analyser (single-beam), Oxygen sensor: paramagnetic type, fuel cell type or external zirconia type
 Number of measurement ranges : Up to 2 ranges for each component
 Repeatability : Within $\pm 0.5\%$ FS
 Linearity : Within $\pm 1\%$ FS

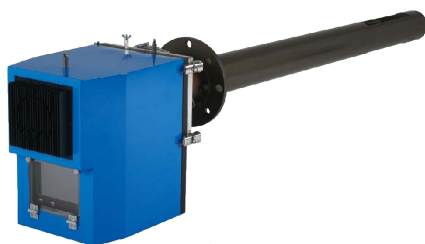
Applicable standard : CE mark
 Outside dimension : 133 (H) x 483 (W) x 382 (D) mm
 Mounting method : 19" rack mount
 Ambient temperature/humidity : -20°C to 60°C , 90%RH or lower
 Power supply : 110 to 240 VAC, 50 Hz



Fuji Electric

In-Situ UV-DOAS - NO, NO2, SO2, NH3 DGA-X

DGA-X model delivers reliable, precise performance at excellent value. It was proven UV-DOAS technology to measure SO2, NH3, separate NO & NO2 measurement is possible through this technology. perfect solution for CEMS, FGD Inlet, Outlet. IT also has an option available with teflon coated probe. This model suited & proven in rugged application.



Features

- ❖ Measures in the low wavelength UV range (200 ~ 400 nm) for high precision and minimal moisture interference
- ❖ Utilizes the differential optical absorption spectroscopy (DOAS) method, eliminating the need for calibration
- ❖ Enables individual NO and NO2 measurements without the need for a NOx converter
- ❖ Optional addition of a standard auto calibration device
- ❖ Certification : TUV-QAL1

Specifications

Operating Temp. : $-20 \sim +55^{\circ}\text{C}$
 Gas Temp. : $< +900^{\circ}\text{C}$
 Probe Materials : SUS 316 L or SUS 316 Ti
 Voltage : 110 - 220 VAC, 50 Hz
 Length : 0.5 ~ 2.5 m

Temp. Sensor : PT 1000
 Measurement Section Length : 300 mm, 500 mm
 Dimensions : W 550 x D 350 x H 850 mm
 Enclosure Rating : IP 65 (IP 66)
 Display & Input Device : 7 inch LCD Monitor (Touch Screen) / USB